



Palouse Prairie Foundation

Promoting preservation and restoration of the Palouse Prairie ecosystem

PO Box 8952
Moscow, ID 83843

[Facebook](#)

[Email](#)

[Website](#)

Upcoming Events

Annual Meeting and Elections
Online meeting
December 1, 2020
7:00 p.m.

Alternative Giving Market of the Palouse
Latah County Fairgrounds
December 5, 2020
10 a.m. to 2 p.m.

Palouse Prairie Flyer

Newsletter of the Palouse Prairie Foundation Fall 2020



Fosberg prairie visit, Jun 24, 2016 (photo by David Hall)

Welcome to Fall!

Fall has arrived and so has the Palouse Prairie Flyer with a new look. In addition to sharing news with you, we also give a tribute to a major Palouse Prairie supporter, Dr. Maynard Fosberg, who recently passed away at the age of 101 from causes related to COVID-19.

The COVID-19 pandemic has also impacted our activities this year. We canceled field activities in order to keep everyone safe and comply with Washington and Idaho health guidelines. We hope to see everyone again as soon as we can meet safely.

It is also time for the PPF Annual Meeting. The Board is working out details to meet virtually at 7 p.m., December 1. Additional meeting information will be sent to members via email.

Here's what's included in this edition of your newsletter:

- [Saying Goodbye to a Restoration Pioneer](#)
- [Lilacs Flagged for Removal at Whelan Cemetery](#)
- [Summer's End at the John Crock Pollinator Garden](#)
- [Support PPF at Alternative Giving Market of the Palouse](#)
- [Notice of Annual Meeting, December 1](#)
- [Are You Eligible for a Mini-Grant?](#)
- [2021 Membership Letter](#)

Saying Goodbye to a Restoration Pioneer

By David Hall

The Palouse Prairie Foundation is saddened by the passing of Dr. Maynard Fosberg, a “Palouse Prairie restoration pioneer.” In 1951, he and his wife Margaret bought farmland east of Moscow, at “D” Street and Mountain View Road. The property was annexed into the city in 2001. In 1999, he put 17 acres of the property under a conservation easement with the Palouse Land Trust, meaning that it cannot be developed. In 2010 he put an additional 5 acres under a conservation easement. He reconstructed Palouse Prairie fields, planting back native vegetation and creating pollinator habitat. Dr. Fosberg continued his restoration work up until the age of 101.



Fosberg restoration plan 2008, prairie results as of 2017, and Dr. Maynard Fosberg (photos by David Hall)

Lilacs Flagged for Removal at Whelan Cemetery

by Joan Folwell

There will be major changes at Whelan Cemetery in the next month. If you have visited Whelan, you have noticed that the lilac bushes planted by the pioneers more than 100 years ago are spreading and encroaching into the native prairie. Last spring, Palouse Prairie Foundation applied for a grant from the Washington Native Plant



Society to remove most of the bushes. In April, PPF was awarded \$700 to accomplish this. Since the purpose as a cemetery needs to be respected, certain designated lilacs next to the gravesites will remain. Lovell’s Tree Service has been contacted and will cut down the remaining bushes to ground level and remove the debris. The total cost will be \$3000, so please note that the grant does not cover the entire amount. In other words, please join this effort to improve this valuable prairie remnant with your membership dues and donations!

Joan Folwell tagging a lilac for removal (photo by David Hall)

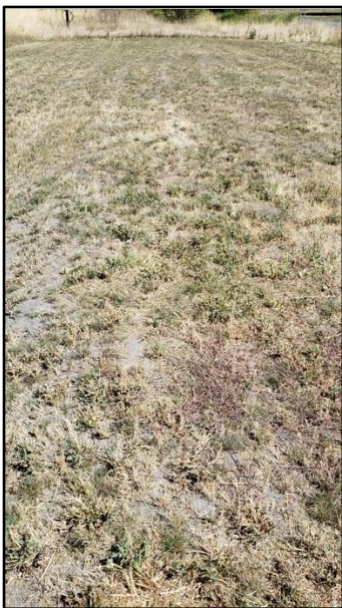
Summer's End at the John Crock Pollinator Garden

by Elisabeth Brackney

After enjoying the camas blooms this spring, it has been a summer of weeds and weeding at the John Crock Pollinator Garden, adjacent to Highway 8 just east of Moscow city limits. In an effort to control the considerable number of weeds, Palouse Prairie Foundation (PPF) contracted with MRT Services to mow for the fourth time this year. The western half of the field (photo A) has fewer weeds and more native grasses than the eastern half (photo B), which is mostly prickly lettuce. Elisabeth hopes that the prickly lettuce and sowthistle will not grow any more flower shoots this fall.

MRT did not mow along the southern edge of the plot to avoid the recently planted shrubs (photo C). Elisabeth pulled as many of the weeds as she could in August. The ground is too hard now to get all the roots out, so she mostly just broke off the flower stalks. There is also a narrow strip of weeds remaining along the western edge (photo D).

The PPF board is determining what approach to take next year to help reduce weeds. If you have an interest in helping to nurture this natural garden space or other locations, send an email to secretary@palouseprairie.org. Your assistance would be appreciated, and you will be helping to create a lovely place for pollinators (and people) to enjoy.



A: Fewer weeds and more grasses on western half



B: A lot of prickly lettuce on the eastern half



C: Weeds around recently planted shrubs on southern edge



D: Weeds along western edge

Support PPF at Alternative Giving Market of the Palouse



When: December 5, 10 a.m. to 2 p.m.

Where: Latah County Fairgrounds

The Palouse Prairie Foundation is one of twenty-six local organizations participating in the Alternative Giving Market of the Palouse. The 2020 giving market will be a drive-through event where you can come and shop off of the shopping list from the safety and comfort of your car. Volunteers will meet you at your vehicle. Please come by to make your donations. More information is available on Facebook – [AGMP 2020](#)

2020 Board



David Hall
President



Eric Anderson
Vice President



Joan Folwell
Treasurer



Elisabeth Brackney
Secretary



Kim Sarff
Member at Large

Notice of Annual Meeting, December 1

by David Hall and Kim Sarff

Nominations and Election

The call for nominations to serve as a PPF board member for the next term was sent by email on October 28. All terms are one year. We generally meet once per month; the minimum commitment is to prepare for and attend most of the board meetings. One must be a PPF member and at least 18 years of age to be a PPF board member.

Notice of our annual meeting and ballots are expected to be mailed no later than November 3. A meeting reminder is posted on the PPF Facebook page and on the PPF website.

All ballots received by noon, December 1, will be counted by an Election Committee. The results will be announced during the annual meeting. If you are interested in participating on the Election Committee, please send an email to secretary@palouseprairie.org.

First Virtual Meeting

The 2020 Palouse Prairie Foundation annual meeting will be held online this year, starting at 7 p.m., December 1. Expect a review of our accomplishments and a look forward from our treasurer, Joan Folwell, a slideshow put together by Kim Sarff, and door prizes.

RSVP to secretary@palouseprairie.org for information on how to "call in."

Please note that a regular meeting of the Board of Directors is held immediately after the annual meeting for the purpose of electing the officers of the Corporation, as required by the PPF bylaws.

Annual Membership Dues

One traditional activity of the annual meeting was to collect annual membership dues for the upcoming year. Because we will not be able to meet face-to-face, we ask that you mail your dues to PO Box 8952, Moscow, ID 83843. A membership form will be mailed with the ballots, and one is also included at the end of this newsletter.

If you have any questions or concerns, please let us know.



Are You Eligible for a Mini-Grant?

by David Hall

In 2008, PPF initiated a mini-grant program to promote the conservation and restoration of Palouse Prairie and to raise public awareness of this endangered ecosystem. This program provides small grants (up to \$1000) to those interested in the conservation and restoration of Palouse Prairie.

NOTE: You do not need to be a PPF member to receive a mini-grant.

Mini-grants awarded by PPF include funding for:

- Prairie restoration on private property on Paradise Ridge, in the Viola area, and near Mary Minerva McCroskey State Park.
- Prairie plantings at multiple locations, including John Russell Elementary School, Lena Whitmore Elementary School, Moscow Charter School (with a study of water-reduction aspects of using native plants), University of Idaho, Appaloosa Museum and Heritage Center, U.S. Forest Service Research Station, and a pollinator garden along the Latah Trail.
- Juliaetta Elementary School project, educating children about the importance of preservation, conservation, and restoration.
- Creation of a native-plants trail with signage at Virgil Phillips Farm.
- Research on the genetics of the Giant Palouse Earthworm, camas lore, and reference books for Steptoe Butte.

The application form for PPF mini-grants is on our [website](#).

We Invite You to Join PPF

Are you interested in becoming a PPF member? It's easy. Please complete and mail the [form](#) on the next page. In this way, you can help us fulfill our mission of promoting and preserving the Palouse Prairie ecosystem.



Prairie Garden at Russell Elementary School, Moscow, ID, 2012 and 2018 (photos by David Hall)

Research on the genetics of the Giant Palouse Earthworm (photo by David Hall)





2021 Palouse Prairie Foundation Membership Letter

PRESERVE - PROTECT - PROMOTE

Why should you support the Palouse Prairie Foundation with your 2021 membership?

In 2020, the Palouse Prairie Foundation:

- Controlled weeds at Whelan Cemetery through volunteer efforts led by Eric Anderson, removed encroaching lilacs with funding from the Washington Native Plant Society, and supported the Palouse Conservation District.
Continued to develop the John Crock Native Plant and Pollinator Garden site on the Latah Trail (east of Carmichael Road) by controlling weeds through volunteer labor led by Elisabeth Brackney and a mowing service; planted native trees and shrubs and monitored the development of native grasses by efforts of Elisabeth Brackney and Joan Folwell.
Provided a \$1000 mini-grant to the Appaloosa Horse Museum for establishing a native plant garden.
Collaborated with Eastern Washington University to establish their 150-acre Palouse Prairie restoration project, including completion of a "Palouse Prairie Needs Assessment" and a study of Palouse Prairie soils.
Protected Palouse Prairie remnants on applications for two cell tower sites and one home site because of PPF-initiated regulations in the Whitman County Critical Area Ordinances.

Your support of PPF is a direct benefit to YOU:

- Receive invitations to local-area field trips.
Get direct access to the expertise and experience of other restorers and protectors of the Prairie.
Add your effort at the level and in the activity of your choice to help preserve this important ecosystem.

The Palouse Prairie Foundation is a 501(c)(3) non-profit organization, and donations are tax deductible. Email messages are the primary way that members are notified of all events and news. Please provide the membership information requested below and send it with your dues to:

Palouse Prairie Foundation, P.O. Box 8952, Moscow, Idaho 83843-1452

THANK YOU!

Membership Information

Name _____ Dues: [] Student \$10
Street Address _____ [] Regular \$20
City, State, Zip _____ [] Family \$35
E-mail Address _____ [] Sustaining \$50
Comments _____ [] Patron \$100
_____ [] Lifetime \$250
_____ [] Donation _____